

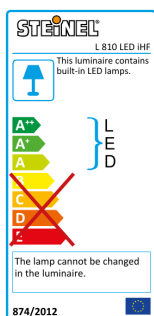
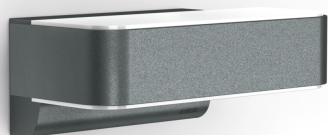
Sensor-switched LED outdoor light

L 810 LED iHF Connect

Anthracite

EAN 4007841 065706

Article number 065706



- Up-/Downlight
- LED
- 3000K
3000K warm-white
- intelligent high frequency sensor
160°
- 1 - 5 m
- IP44
- 2 - 1000 lux
- 5 sec - 15 min
- soft light start
- 10% basic brightness

Function description

The most modern outdoor light in the world. Designer sensor-switched outdoor light L 810 LED iHF Connect with invisible high-frequency sensor, ideal for building entrances and fronts of buildings, 12,5 W STEINEL LED lighting system, 858 lm, 160° coverage angle, reach from 1 - 5 m, for stylish up and downlighting, includes soft light start and optional manual override for 4 hours. Wirelessly interconnectable by Bluetooth and adjustable and controllable via free app.

L 810 LED iHF Connect

Anthracite

EAN 4007841 065706

Article number 065706



Technical specifications

Dimensions (L x W x H)	146 x 230 x 91 mm
Mains power supply	220 – 240 V / 50 – 60 Hz
Mounting height max.	2,50 m
Sensor Technology	iHF (intelligent high-frequency technology)
Transmitter power	
Output	12,5 W
Interconnection	Yes
Type of interconnection	Master/master
Slave mode/selectable	Yes
Luminous flux	858 lm
Efficiency	69 lm/W
Colour temperature	3000 K
Colour variation LED	SDCM3
Farbwiedergabeindex	80-89
With lamp	Yes, STEINEL LED system
Lamp	LED cannot be replaced
LED life expectancy (max. °C)	50000 h
Drop in luminous flux in accordance with LM80	L70B10
Base	without
LED cooling system	Active and Passive Thermo Control
With motion detector	Yes
Detection angle	160 °
Sneak-by guard	Yes
Capability of masking out individual segments	No
Electronic scalability	Yes

Mechanical scalability	No
Reach, detail	Detection zone adjustable on 2 axes
Reach, radial	r = 5 m (35 m ²)
Reach, tangential	r = 5 m (35 m ²)
Photo-cell controller	Yes
Twilight setting	2 – 1000 lx
Time setting	5 s – 15 Min.
Basic light level function	Yes
Basic light level function time	10/30 min, all night
Main light adjustable	50 - 100 %
Soft light start	Yes
Continuous light	selectable, 4h
Impact resistance	IK03
IP-rating	IP44
Protection class	II
Ambient temperature	-20 – 50 °C
Transmitter range	30 m
Housing material	Aluminium
Cover material	Plastic, opal
Manufacturer's Warranty	3 years
Settings via	Bluetooth, Potentiometers
With remote control	No
Version	Anthracite
PU1, EAN	4007841065706

Sensor-switched LED outdoor light

L 810 LED iHF Connect

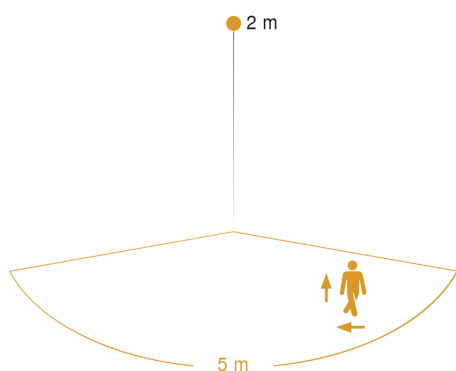
Anthracite

EAN 4007841 065706

Article number 065706



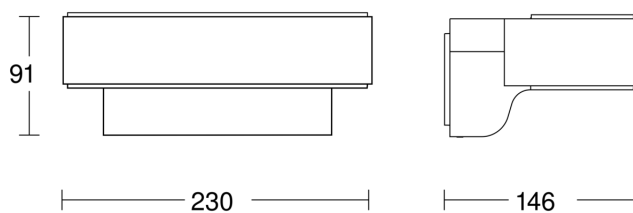
Detection Zone



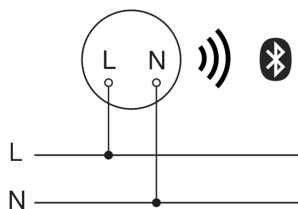
Mögliche Montagehöhe: 1,80 m – 2,50 m

Orange: radial und tangential

Dimension Drawing



Circuit diagram Bluetooth



Master/master bluetooth interconnection circuit diagram

