

E4271L - Elipta Compact Wall Spotlight



Installation notes

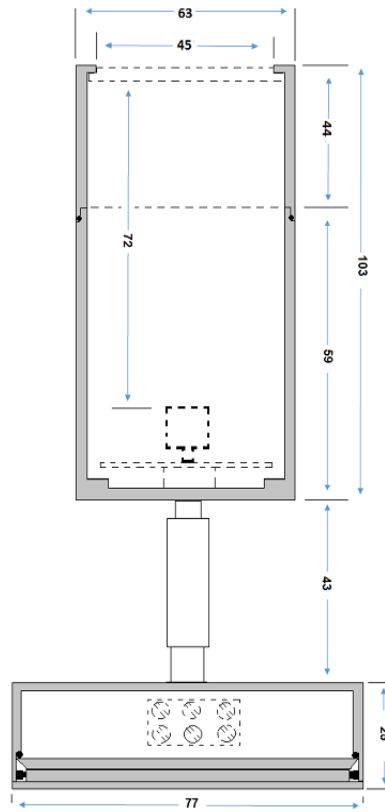
Ensure mains supply is isolated prior to installation of this product.

Unscrew the bezel and insert lamp. Apply small amount of grease to thread and screw back on to the body of the light. Refer to the instruction manual for further guidance.

Note – This product must be installed by a qualified electrician.

Part code	E4271L
Diffuser	Clear
Dimensions (mm)	Body – 103x63
Construction	Aluminium
Finish	Rustic brown powder coat
Class	Class III
IP rating	IP65
Maximum wattage	LED - 10W
Lamp base	MR16
Lamp included	No
Dimmable	Dependant on lamp
Input voltage	12V DC
Net weight (g)	447
Gross weight (g)	497
Warranty	2 Years
Manufactured in accordance with	BS EN 60598
Origin of manufacture	PRC





2 YEAR WARRANTY

Powder Coated Aluminium Body & Fitting

Exclusions: Damage by machinery, animals or the use of incorrect cleaning materials. Corrosion due to exposure to salt or chlorine. Damage due to incorrect installation practices. Responsibility for 3rd party cost; indirect or consequential loss.

2 YEAR WARRANTY

Internal wiring & lampholder

Exclusions: Damage due to incorrect lamp fitting or lamps above specification. Responsibility for 3rd party cost; indirect or consequential loss