

246.07.ORB / 246.07.ORT


DT STUDIO

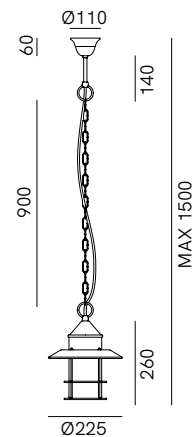
Collezione di lampade rustiche dal mood moderno, Granaio include lampade a sospensione, applique e lampioni da esterno. L'estetica è ispirata alle lanterne del passato, rilette all'insegna di un'essenzialità contemporanea che ben si adatta ai contesti più diversi.

A collection of rustic lamps with modern appeal, Granaio includes Italian copper and brass pendant lamps and wall lamps, as well as garden lamps. The aesthetic look is inspired by traditional lanterns, reinterpreted with contemporary essentiality that is perfectly suited to the most varied of contexts.



SPECIFICHE TECNICHE | TECHNICAL DATA

Tipologia Type	sospensione pendant
Ambiente Environment	outdoor
Materiali Materials	Ottone - rame - vetro Brass - copper - glass
Fonte luminosa Light source	1 x Max 15W LED E27 (non inclusa not included)
Tensione Voltage	240 Vac 50-60 Hz
Dimmerazione Dimming	Taglio di fase IGBT / TRIAC Phase cut IGBT / TRIAC
Scatole Boxes	1
Volume totale Total volume	0,060 m ³
Peso lordo Gross weight	3 kg
Certificazioni Certifications	CE EAC  IP44



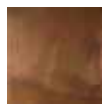
FINITURE | FINISHES

Montatura | Frame



O
Ottone Anticato
Antique Brass

Testa | Shade



R
Rame Anticato
Antique Copper

Vetro | Glass



B
Bianco
White



T
Trasparente
Transparent